

# STRIKE OUT HUNGER

[www.uwgmc.org/soh](http://www.uwgmc.org/soh)

TENTH ANNUAL

SERIES OF EVENTS

TOGETHER WE  
CAN END HUNGER  
IN MERCER COUNTY

BECOME A PARTNER!

JUNE 11, 2024 MEAL PACKING EVENT

THE COLLEGE OF NEW JERSEY

EVENT IS INSIDE WITH LIMITED ATTENDANCE. SUBJECT TO CHANGE



UNITED WAY of  
Greater Mercer County

In partnership with



MERCER STREET  
FRIENDS



# WHAT IS STRIKE OUT HUNGER?

Strike Out Hunger is a multi-prong initiative that unites companies, individuals and advocates to alleviate hunger in Mercer County. There are 61,171 local families struggling to make ends meet and to put food on their table.\* Strike Out Hunger will provide meals, fresh produce and non-perishables to food bank and food pantry partners to ensure families have access to food throughout the year – particularly during the summer months when food becomes even more scarce.

*\*Source: United Way NJ ALICE Report 2020 & Feeding America 2020*

## WHY SPONSORSHIP MATTERS:

Proceeds from corporate sponsorships cover the cost to purchase meals and to provide locally grown fresh produce to individuals and families in need.

- Our meal supplies are purchased through various local & national partners.
- We work to secure fresh produce from local sustainable farms.

## SPONSORSHIP OPPORTUNITIES

### DIAMOND: \$10,000 – EXCLUSIVE SPONSORSHIP OPPORTUNITY

- Brief speaking role by a company representative during the Strike Out Hunger kick-off event in June
- Membership to United Way Tocqueville Society (national benefits)
- Logo on food collection box in locations throughout Mercer County during summer months
- Logo on website and signage at Strike Out Hunger kick-off event
- One (1) employee participation on Strike Out Hunger Committee; Benefits to committee participation include networking with business and civic leaders and additional recognition on social media, UWGMC website, annual report, and other outreach & marketing collaterals
- One (1) exhibit table on event day kick-off (bring your promotional materials & products)
- Company team registration for up to 25 to participate in meal packing at the Strike Out Hunger kick-off event
- Special acknowledgment during Strike Out Hunger kick-off event
- Inclusion in UWGMC's social media for the kick-off event (Facebook, Instagram, and LinkedIn)
- Sponsor-level recognition in press releases, ads, PSAs, eblasts and website related to Strike Out Hunger – media impressions reaching more than 10,000
- Listing under Caring Corporations on the UWGMC website & annual report

### HOME RUN: \$7,500 – 3 SPONSORSHIP OPPORTUNITIES

- Logo on food collection box in locations throughout Mercer County during summer months
- Logo on signage at Strike Out Hunger kick-off event
- One (1) employee participation on Strike Out Hunger Committee; Benefits to committee participation include networking with business and civic leaders and additional recognition on social media, UWGMC website, annual report, and other outreach & marketing collaterals
- One (1) exhibit table on event day kick-off (bring your promotional materials & products)
- Company team registration for up to 20 to participate in meal packing at the Strike Out Hunger kick-off event
- Special acknowledgment during Strike Out Hunger kick-off event
- Inclusion in UWGMC's social media for the kick-off event (Facebook, Instagram, and LinkedIn)
- Sponsor-level recognition in press releases, ads, PSAs, eblasts and website related to Strike Out Hunger – media impressions reaching more than 10,000
- Listing under Caring Corporations on the UWGMC website & annual report

## SPONSORSHIP DEADLINE APRIL 19, 2024\*

Sponsorship opportunities can be customized to meet marketing, budgeting and philanthropic goals

To become a sponsor, please contact: [sandra.toussaint@uwgmc.org](mailto:sandra.toussaint@uwgmc.org) or 609-896-1912

*\*To ensure logo is included on all sponsored marketing collateral.*

# SPONSORSHIP OPPORTUNITIES continued

## POWER HITTER: \$5,000 – 5 SPONSORSHIP OPPORTUNITIES

- Logo on signage at Strike Out Hunger kick-off event
- One (1) employee participation on Strike Out Hunger Committee; Benefits to committee participation include networking with business and civic leaders and additional recognition on social media, UWGMC website, annual report, and other outreach & marketing collaterals
- One (1) exhibit table on event day kick-off (bring your promotional materials & products)
- Company team registration for up to 15 to participate in meal packing at the Strike Out Hunger kick-off event
- Special acknowledgment during Strike Out Hunger kick-off event
- Inclusion in UWGMC's social media for the kick-off event (Facebook, Instagram, and LinkedIn)
- Sponsor-level recognition in press releases, ads, PSAs, eblasts and website related to Strike Out Hunger
  - media impressions reaching more than 10,000
- Listing under Caring Corporations on the UWGMC website & annual report

## LEAD RUNNER: \$2,500 – 15 SPONSORSHIP OPPORTUNITIES

- Company team registration for up to 10 to participate in meal packing at the Strike Out Hunger kick-off event
- Special acknowledgment during Strike Out Hunger kick-off event
- Inclusion in UWGMC's social media for the kick-off event (Facebook, Instagram, and LinkedIn)
- Sponsor-level recognition in press releases, ads, PSAs, eblasts and website related to Strike Out Hunger
  - media impressions reaching more than 10,000
- Listing under Caring Corporations on the UWGMC website & annual report

**FOR MORE INFORMATION VISIT [WWW.UWGMC.ORG/SOH](http://WWW.UWGMC.ORG/SOH)**

### SPONSORSHIP COMMITMENT FORM **STRIKE OUT HUNGER**



Thank you for your interest in our Strike Out Hunger initiative

Diamond: \$10,000     Home Run: \$7,500     Power Hitter: \$5,000     Lead Runner: \$2,500

---

CONTACT NAME

---

COMPANY

---

EMAIL

---

PHONE

### PAYMENT INFORMATION

CC#: \_\_\_\_\_ EXP Date: \_\_\_\_\_ CVV # \_\_\_\_\_

---

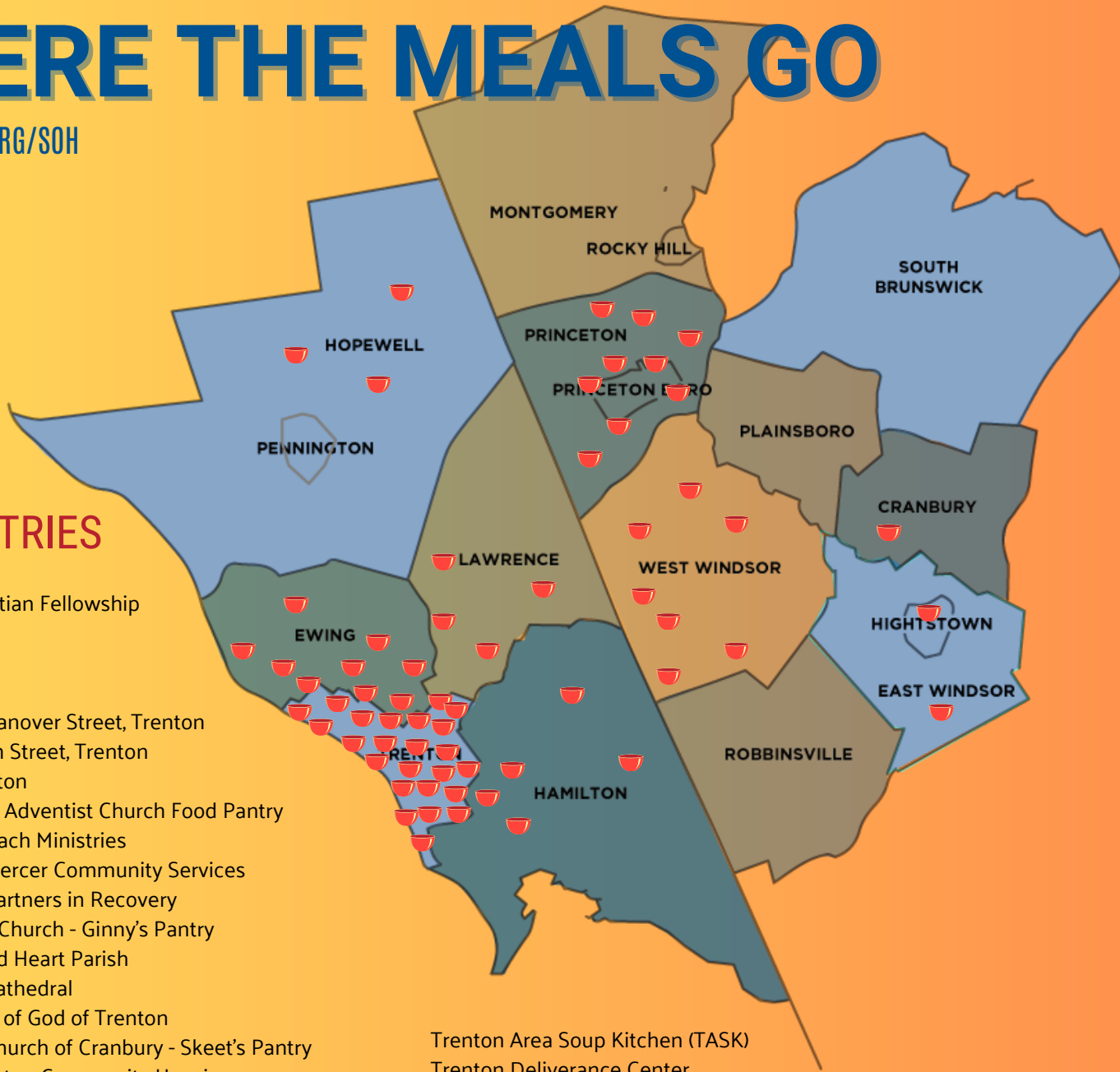
NAME AND ADDRESS ASSOCIATED WITH THE CARD

\*Make Checks Payable to United Way of Greater Mercer County, 3444 Quaker Bridge Rd, Bldg 3, Suite 101 Hamilton,, NJ 08619

\*Please email an EPS file of your logo to [john.santana@uwgmc.org](mailto:john.santana@uwgmc.org)

# WHERE THE MEALS GO

[WWW.UWGMC.ORG/SOH](http://WWW.UWGMC.ORG/SOH)



## FOOD PANTRIES

- A Better Way, Inc.
- Abundant Life Christian Fellowship
- Amani House
- Anchor House
- ARC Mercer
- Arm in Arm - East Hanover Street, Trenton
- Arm in Arm- Hudson Street, Trenton
- Arm in Arm - Princeton
- Bethel Seventh Day Adventist Church Food Pantry
- Bethel World Outreach Ministries
- Catholic Charities Mercer Community Services
- Catholic Charities Partners in Recovery
- Christ Presbyterian Church - Ginny's Pantry
- Divine Mercy/Sacred Heart Parish
- Faith Deliverance Cathedral
- First Haitian Church of God of Trenton
- First Presbyterian Church of Cranbury - Skeet's Pantry
- Griggs Farm - Princeton Community Housing
- HomeFront Family Preservation Center
- HomeFront Pantry
- Isles Youth Institute - Ned's Pantry
- Jewish Family and Children's Service of Greater Mercer County
- Lawrence Community Center
- Mercer Street Friends Parenting Program
- Mount Carmel Guild
- New Covenant United Methodist Church
- New Hope Church of God
- NJ Conference of Seventh Day
- Adventist/Adventist Community Services
- Primera Iglesia Pentecostal Alpha & Omega
- Princeton Deliverance Center
- Rescue Mission of Trenton
- Resurrection Lutheran Church - Pat's Giving Hearts Pantry
- Rise - A Community Service Partnership
- Sacred Heart Cathedral
- Salvation Army Trenton Citadel Corps Community Center
- Samaritan Baptist Church
- St. Raphael-Holy Angels Food Pantry

- Trenton Area Soup Kitchen (TASK)
- Trenton Deliverance Center
- Trinity Episcopal Cathedral Food Pantry
- Turning Point United Methodist Church
- United Progress Transitional Housing
- United Progress, Inc.
- Victorious Church Food Pantry
- Word to the World Ministries - The Kitchen

- Gregory Elementary
- MLK Elementary
- MSF Preschool
- Parker Elementary
- Rivera Community Middle
- Washington Elementary
- Dutch Neck Elementary
- Maurice Hawk Elementary
- Millstone River Elementary
- Town Center
- Village Elementary
- Wicoff Elementary
- Community Park
- Johnson Park
- Littlebrook
- Riverside
- John Witherspoon
- Princeton Charter School

## SCHOOLS

- Antheil Elementary
- Lore Elementary
- Parkway Elementary
- Greenwood Elementary
- Pace Charter
- Wilson Elementary
- Slackwood Elementary
- Bear Tavern Elementary
- StonyBrook
- Grant Elementary

\* Source Mercer Street Friends Food Bank